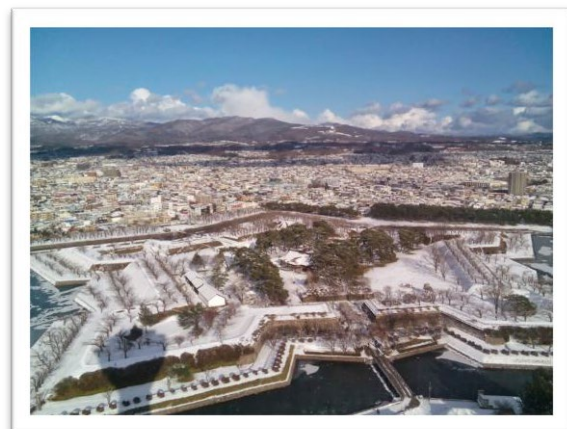


**PARE Program**  
**Graduate Program**  
**for Fostering Frontiers of Practical Solutions**  
**in a Populations-Activities-Resources-Environments (PARE)**  
**Chain**

**Application and Course Guide**  
**(Summer 2022 Admission for PARE Consortium Universities)**



**I. PARE Course Outline (\*PARE Program will be changed to One Program for Global Goals (OGGs) and renamed as PARE Course under the new program from April 2022)**

The PARE course offers graduate students, especially master-degree students, the opportunity to work together with other students majoring in different fields with diverse national and cultural backgrounds to create solutions to various issues related to the sustainable management and use of resources in the PARE (Populations-Activities-Resources-Environments) chain.

ASEAN countries have experienced rapid economic growth in recent years, resulting in expansion of middle-class populations and residential concentrations in cities. These urbanization phenomena – that is, the concentration of populations and related activities – cause the depletion of fossil fuels, water and land resources as well as the deterioration of environments. This exacerbates food, shortages as well as sanitary and nutritional problems among the poor in particular. These worsening conditions result in higher mortality rates, which are then counterbalanced by higher birth rates and further population growth.

As this vicious cycle in the PARE (Populations-Activities-Resources-Environments) chain strongly affects the global environment, a broad array of activities needed to solve the problems that arise. These should cover both rural and urban areas and encompass a variety of sectors including forest conservation and development, waste management, biomass utilization, transportation, renewable energy promotion and energy conservation.

To produce leaders and create a network to tackle these issues, eight universities in Indonesia, Japan and Thailand have joined to form the PARE consortium and conduct a joint education program called the “*Graduate Program for Fostering Frontiers of Practical Solutions in a Populations-Activities-Resources-Environments (PARE) Chain*” (PARE Program).

*PARE consortium universities in Indonesia:*


- ✓ *Institut Pertanian Bogor (IPB)*
- ✓ *Institut Teknologi Bandung (ITB)*
- ✓ *Universitas Gadjah Mada (UGM)*

*PARE consortium universities in Japan:*

- ✓ *Hokkaido University (HU)*

*PARE consortium universities in Thailand:*

- ✓ *Chulalongkorn University (CU)*
- ✓ *Kasetsart University (KU)*
- ✓ *Thammasat University (TU)*
- ✓ *Mahidol University (MU)*



The PARE course helps students develop four key skills needed for solving problems occurring in the PARE chain: “Field Research Capacity”, “Cross Cultural Capability”, “Frontier Spirit” and “Problem Solving Competencies”. By enrolling in this program, you will develop these skills while studying PARE-related issues in a wide range of academic fields, such as agriculture, fisheries science, environmental science, engineering, and information science.

This course offers PARE Basic Program and PARE Advanced Program to graduate students, especially master-degree students. Applicants will receive opportunities to work with other students majoring in different fields with diverse national and cultural backgrounds to find out solutions to PARE-related issues.

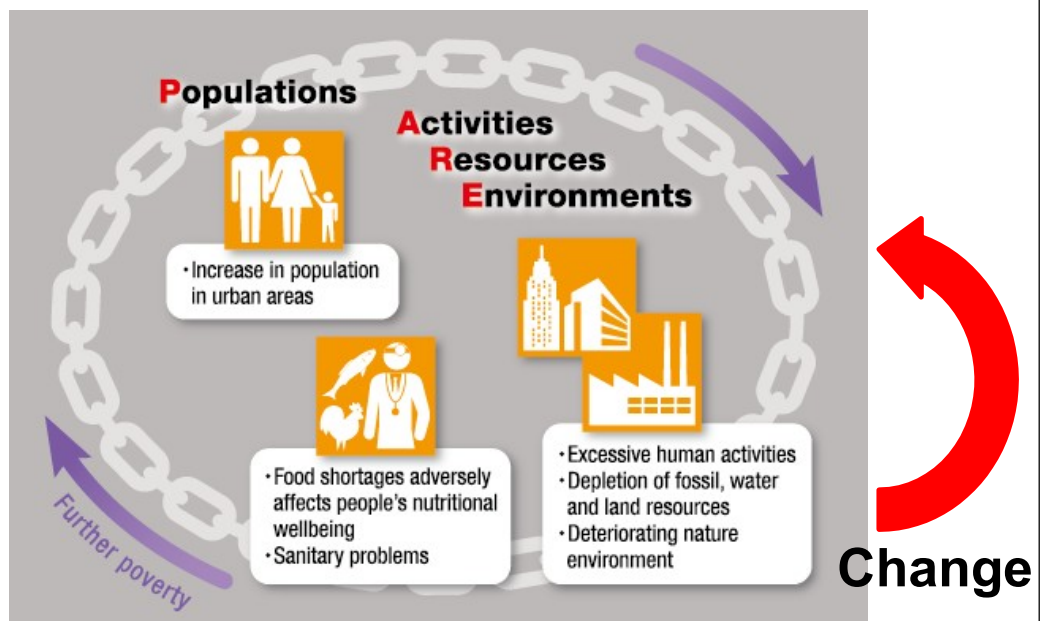
Due to the nature of this course, all educational and research activities are conducted in English.

We invite you to take advantages of this opportunity.

**What is “PARE”?**

Human **population** growth and excessive human **activities** cause unprecedented demands for natural **resources** (fossil, water, land resources, etc.), the intensification of agriculture, and the rapidly growing and globalizing economy and urbanization, which all contribute to the degradation of **environments** and climate change, which further lead to decreased natural resources and food shortages that adversely affect people’s nutritional well-being.

We call these linkages between **populations**, **activities**, **resources**, and **environments** “PARE”.



## II. Application Guidelines (2022 Summer admission for Consortium Universities)

### **Course and Period**

PARE Basic Program: July 4 – August 5, 2022

\*PARE Advanced Program will be introduced to the students hoping to study specialized subjects at Hokkaido University after completing the PARE Basic Program. Specialized subjects will be introduced in April.

### **Number of Students**

4 from each consortium university

### **Qualifications**

#### **1. Academic Background**

Applicants must be:

- 1) Currently enrolled in a master-degree program; and
- 2) Motivated or willing and able to help solve PARE-related issues in Asia, or currently working on research course/project related to the PARE outlook and interested in obtaining field work experience and further expand their knowledge

#### **2. English Ability**

Applicants must possess a competent command of spoken and written English, which corresponds to:

- 1) A TOEIC score of at least 740,
- 2) TOEFL (ITP/iBT/CBT) scores of at least 550/80/213,
- 3) An IELTS score of at least 5.5,
- 4) Other English certification that is equal/similar to the above

Lectures and discussions are conducted in English, so proficiency in English is required.

#### **Grade Point Average (GPA)**

Applicants must have:

- 1) An outstanding academic record and demonstrated strong personal character at their home institution, and
- 2) A minimum GPA of 2.30 (based on the JASSO evaluation scale) from the previous academic year. If the previous year's GPA is not available, students can calculate their GPA from the previous semester.

### **Requirements for Completion:**

Applicants must take the following 5 subjects to complete PARE Basic Program Course.

\*Introduction to SDGs (Populations-Activities-Resources-Environments Chain in Asian Countries and Japan) is a recommended PARE elective subject.

Subject Category	Compulsory/Elective	Subject Name	Credits
PBL Practice	Compulsory	International Co-learning PBL for Problem Solving	1
Introduction to SDGs	Compulsory	Awareness of Glocal Issues and International Collaboration	1
Introduction to SDGs	Compulsory (Elective)	Populations-Activities-Resources-Environments Chain in Asian Countries and Japan	1

SDGs Internship/Field study	Compulsory	Summer School in Japan I and II	2
-----------------------------	------------	---------------------------------	---

FYI: Other subjects that you can choose from the following:

- ① Introduction to SDGs: Sustainable Infrastructure in India and Japan (STSI)
  - ② Introduction to SDGs: Environment, Culture, and Sustainable Development in Russia and Japan I (RJE3)
  - ③ Introduction to SDGs: Environment, Culture, and Sustainable Development in Russia and Japan II (RJE3)
- \*SDGs Internship/Field study (Summer School in Japan I and II) has 2 subjects (Not 1 subject) so please register both.

### **Application Procedure**

1. Obtain the application forms from PARE Liaison Office of your university or download the application forms from the PARE Program website (<https://pare.oia.hokudai.ac.jp/>) .  
Fill in the following forms and apply after being nominated by your university's PARE Liaison Office.
  - Application for OGGs Program <https://forms.gle/U2JNhttDqddewAv9>
  - Application for PARE Course <https://forms.gle/FrWFTsPRraPbFkzd6>
2. Submit the following documents to OGGs Central Office (PARE) through the Liaison Office at your home university in consultation with your academic advisor/supervisor.
  - Self-assessment sheet
  - Certification of English Proficiency test \*You may be asked to submit your supervisor's recommendation letter
  - Official Undergraduate and Graduate Transcript
  - Certificate of Enrollment issued by home institution or photocopy of student ID card
  - Photocopy of passport
  - Photo (3X4cm, Color & Clear, taken within latest six months)
3. Complete the Hokkaido Summer Institute (HSI) application on the HSI 2022 website (<https://hokkaidosummerinstitute.oia.hokudai.ac.jp/applications/>)
4. Upload the following documents to the HSI website:
  - Application Form
  - Photo (front-facing, upper body, no hat; 354 x 295 pixels)
  - Official certificate of student status (showing 1) the date of enrollment and 2) the duration of study or the expected graduation date at home institution)
  - Official academic transcript
  - **Official English Proficiency test certificate \*Duolingo English Test is a requirement from HSI for those who don't have any English test certificate: <https://englishtest.duolingo.com/jp>**
  - Copy of passport

### **Application Schedule**

2022 Summer PARE Course Application deadline (to PARE Central Office)	2022 Hokkaido Summer Institute Application period (online application through HSI website)
March 16 , 2022	<b>March 7-16, 2022</b>



- ※ Application submission opens at 12:00 on the first day and closes at 17:00 on the last day of the application period. [Japan Standard Time]. \*15:00 at your end.
- ※ Students from overseas institutions seeking accommodation for a week or more can apply for a place at a Hokkaido University (HU) student dormitory during the application period in March.

**PLEASE NOTE:**

The PARE Liaison Office at each consortium university will collect and submit all applications and necessary documents to OGGs Central Office (PARE) within the above application period. Please contact the PARE Program Liaison Office at your university to find out the internal submission deadline so that the deadline at the OGGs Central Office (PARE) can be met.

### III. Summer 2022 PARE Basic Subjects **\*It may be held online due to the situation of COVID-19.**

- PBL Practice

PBL (Problem/Project Based Learning) is conducted on the theme of SDGs on various issues facing the international community, which are becoming more diverse and complex, and aims to cultivate students' ability to identify and set specific issues and consider solutions. The goal is to foster the ability of international collaboration by working together with students from all over the world.

The schedule (tentative) in 2022 is as follows:

	International Co-trained PBL for Problem Solving
Theme	It will be given on the day you participate.
Dates	July 4-8
Professors	Professor Hirofumi KATO, Center for Ainu and Indigenous Studies
	Professor Osamu FUJITA, Faculty of Engineering
	Professor Taichiro OKAZAKI, Faculty of Engineering
	Assistant Professor Norihiro WATANABE, Faculty of Engineering
	Associate Professor Junjiro NEGISHI, Faculty of Environmental Earth Science
Syllabus	<a href="https://hokkaidosummerinstitute.oia.hokudai.ac.jp/en/courses/CourseDetail=G107">https://hokkaidosummerinstitute.oia.hokudai.ac.jp/en/courses/CourseDetail=G107</a>

- Introduction to SDGs (Compulsory)

Students will learn about specialized and cross-sectoral issues related to the Sustainable Development Goals (SDGs) through the world's common issues such as "Information sharing," "Ethnicity and Cultural Diversity," "Food and Environment," and "Fisheries Resources and Marine Environment." This subject aims to acquire knowledge and multicultural understanding of global issues, and to develop the ability to contribute to the SDGs

	Awareness of Glocal Issues and International Collaboration
Dates	July 11,12, 14,15
Contents	Frequency resource assignment in wireless communications (Professor Takeo OHGANE, Laboratory of Intelligent Information Communications, Division of Media and Network Technologies, Faculty of Information Science and Technology)
	Environment and Pollution (Professor Vasudevan Pillai BIJU, Research Institute of Electronic Science)
	Population, Food and Environment (Lecturer Yoko SAITO, Research Faculty of Agriculture)
	Pollution of Environmental Water Caused by Human Activity and Technologies for Purification of Polluted Water (Professor Yuichi KAMIYA, Faculty of Environmental Earth Science )
	Sustainable Fisheries and Aquaculture I: Resources and the Environment (Associate Professor John Richard BOWER, Faculty of Fisheries Sciences)
	TBA (Professor Hirofumi KATO, Center for Ainu and Indigenous Studies)

	TBA (Associate Professor Taro MORI, Faculty of Engineering)
	SDG13 Climate Action: Mitigation and Adaptation Measures (Associate Professor Alice SHARP, Chiang Mai University)
Syllabus	<a href="https://hokkaidosummerinstitute.oia.hokudai.ac.jp/en/courses/CourseDetail=G096">https://hokkaidosummerinstitute.oia.hokudai.ac.jp/en/courses/CourseDetail=G096</a>

- Introduction to SDGs (Elective)

	Populations-Activities-Resources-Environments Chain in Asian Countries and Japan
Dates	July 19-22
Contents	Resource Management and Society (Professor Takashi INOUE, Research Faculty of Agriculture)
	Reconstruction of Contaminated Area after the Nuclear Power Plant Accident (Professor Takuro SHINANO, Research Faculty of Agriculture)
	TBA (Professor Takashi SUZUKI, Faculty of Agriculture)
	Reproductive fish physiology for aquaculture (Associate Professor Shigeo IJIRI, Faculty of Fisheries Sciences)
	Water Resources and Water Related Disasters (Professor Norihiro IZUMI, Faculty of Engineering)
	Waste Disposal Engineering-How to Improve Open Dumping Site to Sanitary Landfill (Associate Professor Yasumasa TOJO, Faculty of Engineering)
	Conservation and Social Justice (Associate Professor Masatoshi SASAOKA, Faculty of Letters)
	Introduction to Resilience (Associate Professor Henny OSBAHR, University of Reading)
Syllabus	<a href="https://hokkaidosummerinstitute.oia.hokudai.ac.jp/en/courses/CourseDetail=G099">https://hokkaidosummerinstitute.oia.hokudai.ac.jp/en/courses/CourseDetail=G099</a>

- SDGs Internship/Field study (Compulsory)

	Summer School in JAPAN I and II (PARE)
Dates	July 25 – August 5
Place	Hokkaido University, Japan
Theme	Sustainable Use and Management of Land, Water, Energy Resources and Food Security in PARE Chain
Participation fee For Fieldwork	JPY 40,000
Other cost required	Travel cost to/from host university, Travel insurance fee
Syllabus	<a href="https://hokkaidosummerinstitute.oia.hokudai.ac.jp/en/courses/CourseDetail=G105">https://hokkaidosummerinstitute.oia.hokudai.ac.jp/en/courses/CourseDetail=G105</a>
	<a href="https://hokkaidosummerinstitute.oia.hokudai.ac.jp/en/courses/CourseDetail=G106">https://hokkaidosummerinstitute.oia.hokudai.ac.jp/en/courses/CourseDetail=G106</a>





#### IV. JASSO Scholarship

JASSO Scholarships (JPY 80,000) are available for students who enroll in and successfully complete the PARE Basic Program.

Students receiving JPY80,000 or more per month from other scholarships during the period of your participating this course are not eligible for the JASSO Scholarship.

To receive this scholarship, you must agree to follow some rules and submit the following documents and reports to Hokkaido University after completing the program:

- 1) A Participation Report with photos (format will be provided upon completion of the program)
- 2) A copy of your transcript from your home university that documents transfer of credit
- 3) Applicants must submit the Confirmation of Attendance every month during the period of this course.
- 4) Applicants must have financial difficulty when participating this course without financial support.
- 5) After completing the course, Applicants must continue studies and complete a degree.
- 6) Applicants are not entitled to receive the scholarship if you receive other scholarships at the same time.



PARE Consortium

Chulalongkorn University (Thailand)

Hokkaido University (Japan)

Institut Pertanian Bogor (Indonesia)

Institut Teknologi Bandung (Indonesia)

Kasetsart University (Thailand)

Mahidol University (Thailand)

Thammasat University (Thailand)

Universitas Gadjah Mada (Indonesia)



OGGs will see you in April!

