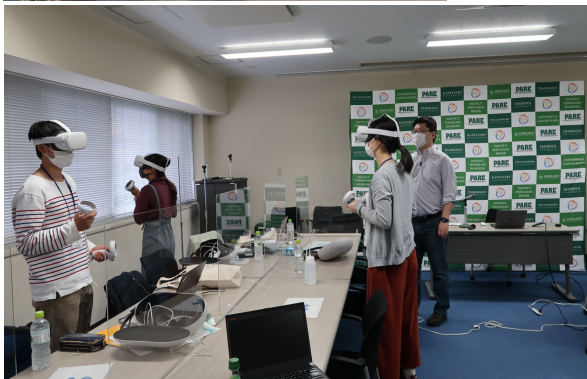


**PARE Program**  
**Graduate Program**  
**for Fostering Frontiers of Practical Solutions**  
**in a Populations-Activities-Resources-Environments (PARE)**  
**Chain**

**Application and Course Guide**  
**(Spring2022 Admission for PARE Consortium Universities)**



## I. PARE Program Outline

The PARE Program offers graduate students, especially master-degree students, the opportunity to work together with other students majoring in different fields with diverse national and cultural backgrounds to create solutions to various issues related to the sustainable management and use of resources in the PARE (Populations-Activities-Resources-Environments) chain.


ASEAN countries have experienced rapid economic growth in recent years, resulting in expansion of middle-class populations and residential concentrations in cities. These urbanization phenomena – that is, the concentration of populations and related activities – cause the depletion of fossil fuels, water and land resources as well as the deterioration of environments. This exacerbates food shortages as well as sanitary and nutritional problems among the poor in particular. These worsening conditions result in higher mortality rates, which are then counterbalanced by higher birth rates and further population growth.

As this vicious cycle in the PARE (Populations-Activities-Resources-Environments) chain strongly affects the global environment, a broad array of activities are needed to solve the problems that arise. These should cover both rural and urban areas and encompass a variety of sectors including forest conservation and development, waste management, biomass utilization, transportation, renewable energy promotion and energy conservation.

To produce leaders and create a network to tackle these issues, seven universities in Indonesia, Japan and Thailand have joined to form the PARE consortium and conduct a joint education program called the “*Graduate Program for Fostering Frontiers of Practical Solutions in a Populations-Activities-Resources-Environments (PARE) Chain*” (PARE Program).


*PARE consortium universities in Indonesia:*

- ✓ *Institut Pertanian Bogor (IPB)*
- ✓ *Institut Teknologi Bandung (ITB)*
- ✓ *Universitas Gadjah Mada (UGM)*




*PARE consortium universities in Japan:*

- ✓ *Hokkaido University (HU)*



*PARE consortium universities in Thailand:*

- ✓ *Chulalongkorn University (CU)*
- ✓ *Kasetsart University (KU)*
- ✓ *Thammasat University (TU)*
- ✓ *Mahidol University (MU)*



The PARE Program helps students develop four key skills needed for solving problems occurring in the PARE chain: “Field Research Capacity”, “Cross Cultural Capability”, “Frontier Spirit” and “Problem Solving Competencies”. By enrolling in this program, you will develop these skills while studying PARE-related issues in a wide range of academic fields, such as agriculture, fisheries science, environmental science, engineering and information science.

This program offers graduate students, especially master-degree students, the PARE Short Program Completion Course. The PARE Short Program Completion Course provides you opportunities to work with other students majoring in different fields with diverse national and cultural backgrounds to find out solutions to PARE-related issues.

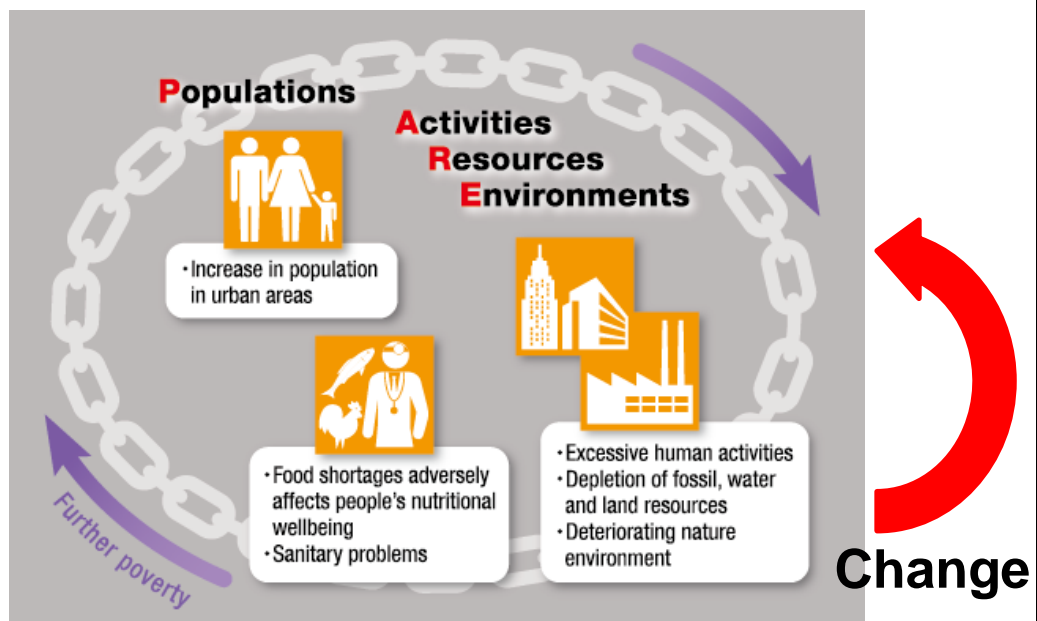
Due to the nature of the program, all educational and research activities are conducted in English.

We invite you to take advantages of this opportunity.

### **What is “PARE”?**

Human **population** growth and excessive human **activities** cause unprecedented demands for natural **resources** (fossil, water, land resources, etc.), the intensification of agriculture, and the rapidly growing and globalizing economy and urbanization, which all contribute to the degradation of **environments** and climate change, which further lead to decreased natural resources and food shortages that adversely affect people’s nutritional well-being.

We call these linkages between **populations**, **activities**, **resources**, and **environments** “PARE”.



## **II. Application Guidelines (2022 Spring admission for Consortium Universities)**

### **Course and Period**

PARE Short Program Completion Plan (Online/face to face) :  
March 7 – March 16, 2022(tentative)

### **Number of Students**

3 from each consortium university

### **Qualifications**

#### **1. Academic Background**

Applicants must be:

- 1) Currently enrolled in a master-degree program; and
- 2) Motivated or willing and able to help solve PARE-related issues in Asia, or currently working on research course/project related to the PARE outlook and interested in obtaining field work experience and further expand their knowledge

#### **2. English Ability**

Applicants must possess a competent command of spoken and written English, which corresponds to:

- 1) A TOEIC score of at least 740,
- 2) TOEFL (ITP/iBT/CBT) scores of at least 550/80/213,
- 3) An IELTS score of at least 5.5, or
- 4) Other English certification that is equal/similar to the above

Lectures and discussions are conducted in English, so proficiency in English is required.

#### **Grade Point Average (GPA)**

Applicants must have:

- 1) An outstanding academic record and demonstrated strong personal character at their home institution, and
- 2) A minimum GPA of 2.30 (based on the JASSO evaluation scale) from the previous academic year. If the previous year's GPA is not available, students can calculate their GPA from the previous semester.

### **Application Procedure**

1. Obtain the application forms from PARE Liaison Office of your university or download the application forms from the PARE Program website (<https://pare.oia.hokudai.ac.jp/>).
2. Submit the following documents to the PARE Central Office through the Liaison Office at your home university in consultation with your academic advisor/supervisor.
  - Form 1: Application Form for PARE Program
  - Form 2: Self-assessment sheet
  - Certification of English Proficiency test (if any)
  - Official Undergraduate and Graduate Transcript
  - Certificate of Enrollment issued by home institution or photocopy of student ID card
  - Photo (3X4cm, Color & Clear, taken within latest six months)

### **Application Schedule**

※ **Application Deadline: December, 7, 2021 (14:00 Western Indonesia/Thailand Time)**

#### **PLEASE NOTE:**

The PARE Program Liaison Office at each consortium university will collect and submit all applications and necessary documents to the PARE Central Office within the above application period.

Please contact the PARE Program Liaison Office at your university to find out the internal submission deadline so that the deadline at the PARE Central Office can be met.

### III. Spring 2022 PARE Program courses

#### ♦ **PARE Short Program (PARE Spring School)**

	Spring School Field Work Training II for PARE & Seminar II for PARE
Theme	Sustainable Use and Management of Land, Water, Energy Resources and Food Security in PARE Chain
Dates	March 7 - March 16, 10 days (tentative) *NO task on Sunday
Organizer	IPB University,Indonesia(Host) ,Mahidol University,Thailand and Hokkaido University,Japan
Course Delivery Format	Online lecture and discussion will be held (both real-time session and on demand). Field trips will also be conducted in 3 countries (Indonesia ,Thailand and Japan).
Cost	Around \$100 (TBA)
Schedule	Please refer to the schedule separately attached
Syllabi	Please refer to the syllabi separately attached



#### PARE Consortium

Chulalongkorn University (Thailand)  
 Hokkaido University (Japan)  
 Institut Pertanian Bogor (Indonesia)  
 Institut Teknologi Bandung (Indonesia)  
 Kasetsart University (Thailand)  
 Mahidol University (Thailand)  
 Thammasat University (Thailand)  
 Universitas Gadjah Mada (Indonesia)

